

# PILE COATING

Alocit coatings have a long history of marine applications, including extensive work on steel and concrete piles and underdecking for port authorities around the world. From New York Harbor to Taiwan, Alocit has proved its durability and ease of application - not just on dry substrates but also underwater and in the splash zone.

For applications in cold or wet conditions, Alocit is the solution of choice because of its durability, ease of use and high adhesion. Records show Alocit lasting over 30 years on concrete in aggressive waste water conditions. Testing on coatings made in freezing conditions on wet steel piles showed Alocit achieving between 1500 and 2000 psi in pull-off tests, with all failures in the dolly adhesive - none in the Alocit coating.

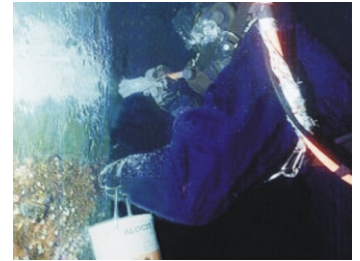
For pile applications, Alocit can be applied underwater using a hand

brush straight from the can or using a pumped system for continuous application over large areas. Coffers dams can also be used to allow access

for better preparation and inspection. Alocit can be applied directly after water jetting with no need for dry surfaces.

*Right: a diver applies Alocit straight from the can, below, a diver applies Alocit using a pumped system supplied from the surface.*

  
**alocitsystems**  
Alocit USA, 3619 South  
Arlington Avenue, Indianapolis,  
IN 46203, United States  
Tel: +1 317 631-9100  
Email: [info@enviropeelusa.com](mailto:info@enviropeelusa.com)  
Group website:  
[www.enviropeelusa.com](http://www.enviropeelusa.com)



*Right and below: Before and during application of Alocit using a coffer dam on sheet piles in Mobile, Alabama.*



## TYPICAL EXAMPLES OF ALOCIT APPLICATION

- **Alabama, USA:** Coffers dams are used to facilitate the application of Alocit to 20,000 ft<sup>2</sup> of sheet piling for Theodore Industrial Port in Mobile.
- **Dung Quat, Vietnam:** 45,000 kg of Alocit is used to refurbish and recoat previously failed coatings above and below water.
- **Mai Liao port, Taiwan:** a huge land reclamation project required the application of Alocit to more than 40,000m<sup>2</sup> of steel and concrete piling and under-decking.
- **New York Harbor, USA:** Sheet piling repair has been carried out for many years by the Port Authority of New York and New Jersey using Alocit coatings in the splash zone and below water.
- **Pascagoula Port Authority, USA:** 10,000 ft<sup>2</sup> of sheet piling coated with Alocit products.